

Our new school street has launched

Arundel Primary School

Jarvis Road will be closed to through traffic beyond Herington Road junction at pick-up and drop-off times



We are working with Arundel Primary School to make the school drop-off and pick-up safer for walking, wheeling and cycling to school.

Our School Street Trial is backed by an Experimental Traffic Regulation Order, this restricts access for unauthorised vehicles during set timings, reducing congestion outside of the school gates and encouraging more active ways to travel to and from school.

**PEDESTRIAN
and CYCLE
ZONE**



**Mon - Fri
8 - 9 am
3 - 4 pm**

**Except for
access**



What is a School Street?

A School Street is a road outside a school with a timed restriction on motorised traffic at school drop-off and pick-up times. The restriction applies to school traffic and through traffic. The outcome is a safer, healthier, and more pleasant environment that nurtures a reduction in car trips and increased levels of walking, wheeling, and cycling. Access will remain for residents and businesses within the school street area.

Where will the restrictions start?

This School Street covers Jarvis Road beyond the junction with Herington Road to the west. The restrictions will operate between 8 to 9am and 3 to 4pm on Monday to Friday.

How?

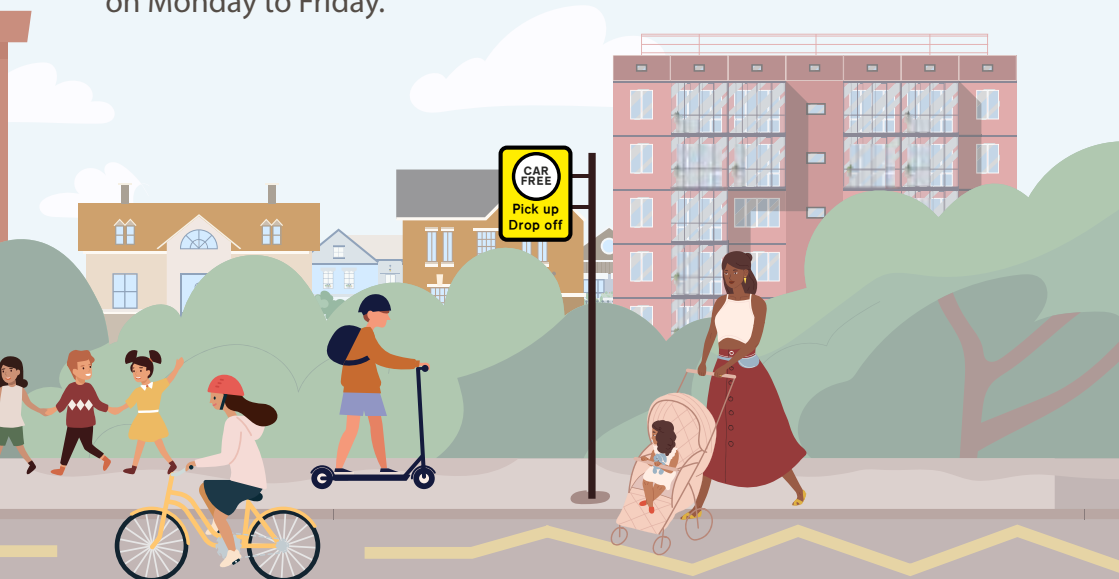
The restrictions will be delivered through a signed Experimental Traffic Regulation Order (ETRO).

During the trial

West Sussex Officers will be constantly monitoring and evaluating the impact of the school street. We will work with the school to promote Active Travel modes including walking, wheeling and cycling and gather data and feedback and to develop safer routes to school.

At the end of the trial

After 6 months we will use the data gathered as well as feedback from the school and wider community to decide if the school street trial needs to be amended, formalised or removed.





Arundel C of E
Primary School

Restriction
signage location

For further information, please visit our
schools engagement website page or email us.

[yourvoice.westsussex.gov.uk/
school-streets](https://yourvoice.westsussex.gov.uk/school-streets)

Email: schoolstreets@westsussex.gov.uk

SCAN ME

